



3Shape 3D Dental Scanners

Surpassing all norms for speed, precision and detail level

A scanner solution for every lab

3Shape offers the market's most flexible range of technology-leading dental scanners for 3D scanning of both impression and gypsum models. Whether you are seeking a secure entry into digital dentistry, or expanding your business model with the full range of dental indications and utmost accuracy - 3Shape has a scanner solution for you.

Designed for productivity

3Shape's Dental Scanners - series D500, D700 and D800 give labs increased productivity plus customer satisfaction through faster delivery and superior clinical results. 3Shape's Dental Scanners are so easy to use that extra staff training is hardly required. Object fixation is quick, and a single click in the user-friendly software starts the scan.

The market's most complete 3D scans

2 cameras with reduced angle enables impressions, deep inlays and full undercuts to be scanned effectively. The 3-axis motion system tilts, rotates and translates the object, facilitating scanning from any viewpoint - more than 350 degrees of a sphere.



3Shape D500

3Shape's D500 series scanner is designed for small to medium-sized labs looking for an easy entry into CAD/CAM digital dentistry.

These compact scanners are built on 3Shape's leading scanning technologies with a reduced range of dental indications to provide a cost-efficient CAD/CAM solution for any laboratory size and budget.

- **Optimized scanning** of gypsum models and impression models
- **Dental System™ Standard** - Covers all basic dental indications
- **Scan time:**
Die: 50 sec (55 sec)
3 unit bridge: 160 sec (185 sec)
- **2 cameras, 1.3 Mega Pixel**
- **High Accuracy:** 20 microns
- **Upgradable** - to Dental System™ Premium for extending the range of available indications and widening your business scope

3Shape D700 series scanners

3Shape's D700 series scanners are for medium to large labs where productivity and flexibility are the key criteria.

The D700 scanner series is 3Shape's user-acclaimed success, servicing thousands of labs all over the world. The D700 is a workhorse of productivity, enabling high throughput for both standard and advanced indications. The D710 additionally supports Multi-Die scanning for ultimate efficiency.

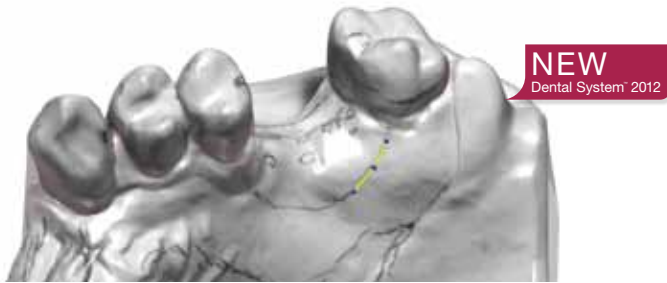
- **Optimized scanning** of gypsum models and impression models
- **Dental System™ Premium** - Covers the full range of dental indications
- **Fast Scan time:**
Die: 25 sec (30 sec)
3 unit bridge: 100 sec (125 sec)
- **2 cameras, 1.3 Mega Pixel**
- **High Accuracy:** 20 microns
- **Multi-Die Scanning** on the D710 - for high productivity with single or multi-case processing

3Shape D800 series scanners

3Shape's D800 series scanners are designed for medium to large labs that demand the utmost accuracy and detail levels for even the most advanced indications.

With its new and unique Texture Scanning capabilities plus 5.0 MP cameras, 3Shape's D800 series scanners wield the market's most advanced 3D scanning technologies. This is a no-limitations device, providing high productivity, extreme accuracy and the complete scope of dental indications for full-service labs that accept only the best.

- **Highly accurate scanning** of gypsum models and impression models
- **Dental System™ Premium** - Covers the full range of dental indications
- **Fast Scan time:**
Die: 25 sec (30 sec)
3 unit bridge: 100 sec (125 sec)
- **2 cameras, 5.0 Mega Pixel**
- **Ultra High Accuracy:** 15 microns
- **Multi-Die Scanning** on the D810 - for high productivity with single or multi-case processing
- **Texture Scanning technology** for high detail detection and capture of hand-drawn design markings on the model



Capture complete textures and pencil markings

Utilizing its 5.0 Mega Pixel cameras, the high-end D800 scanner supports unique **Texture Scanning** capabilities. Texture Scanning captures 2D images of the model surface and precisely overlays these on the 3D model, enhancing visualization of surface details and allowing technicians to include hand-drawn design guidance markings in the digital design. Patent pending.



Implant bridge and bar accuracy

3D scanning in connection with designing implant bridges and bars requires very high accuracy, and 3Shape's D800 series scanners with improved performance are among the few that can deliver reliable data. The D800/D810 scanners are equipped with 5.0 Megapixel cameras which, in combination with high quality scan abutments, enable perfect 3D data capture of both implant positions and implant orientations to ensure a perfect tension-free fit.



Market's most extensive suite of scan indications

All standard scan indications and in addition impression scanning, post & core, 16-unit bridges, articulated antagonist model, wax-up bridges for copy milling, deep inlays, pre-preparation model, un-sectioned model for temporaries, implant position and orientation detection, wax-up customized abutment and wax-up implant bridges for copy milling. The range of available indications depends on the Dental System™ version – Standard/Premium.



High productivity with Multi-Die scanning

Multi-Die scanning on the D710 and D810 scanners provide labs with ultra-efficient batch and multi-case processing. Dies for one or more cases are fixed to the Multi-Die plate, and scanning is automatic, freeing the technician to work with other tasks. Maximum accuracy is obtained by an obstacle-free camera angle, ultra-sharp focus, and optimal mechanical precision.